

# Rv908m32 Receiver Specifications

V3.2

## Revision History

Document Version	Hardware Version	Revision Date	Note
V3.0	V10	2020/1	New edition
V3.1	V10	2022/3	Modified overview type
V3.2		2025/3	Revised capacity

## Overview

Rv908m32 is a standardize product for LED screen manufacturer, which is integrated with 12 standard hub75-type connectors and does not require an extra hub card. One card supports up to 256\*768pixels and up to 24 sets of RCG data.

## Functions and features

1. Single card can support 24 group of RGB data output mode
2. Maximum supports 256\*768 pixels (32 scanning mode for example, and please note that there are recommended values depending on the design of LED screen)
3. Supports brightness calibration pixel by pixel and single-card color space conversion
4. Supports network cable BER test
5. Supports configuration file read back
6. Supports 138 decode, 595 serial decode and so on



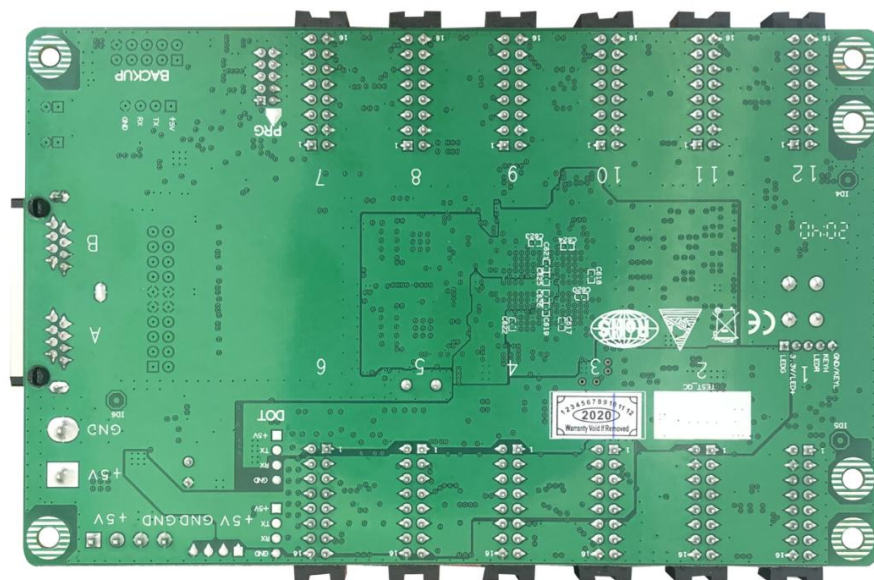
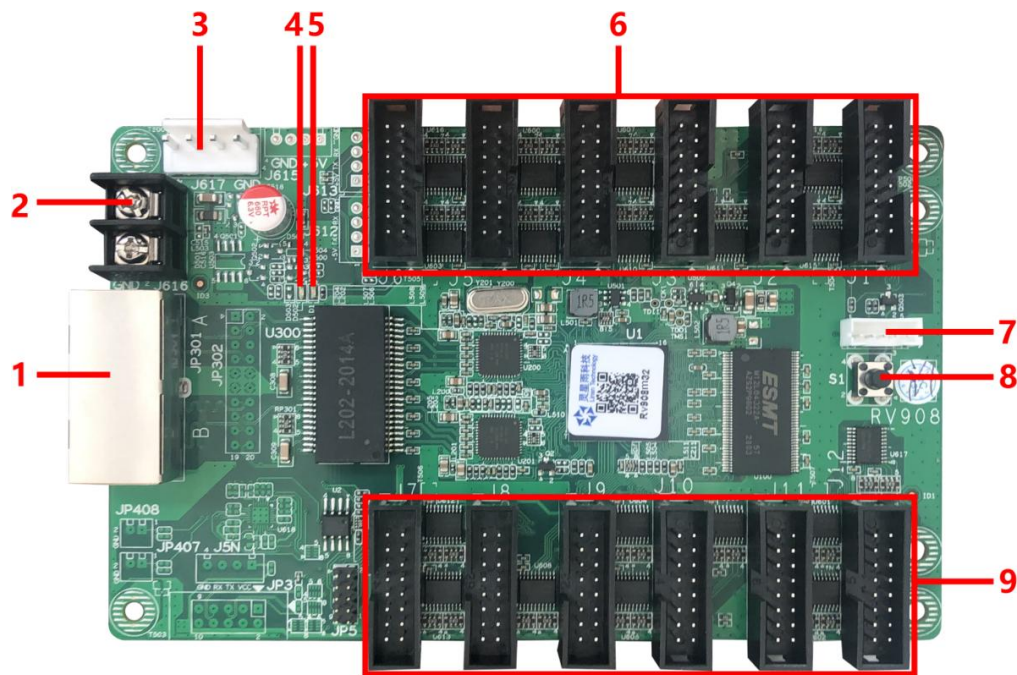
7. Realizes high refresh and high gray level effect

## Appearance

Official website: [www.linsn.com](http://www.linsn.com)

Add: Floor 15&16, Jiajiahao Business Building, No. 10168, Shennan Blvd,  
Nanshan District, Shenzhen

Tel: +86-0755-86183590/ 4008836968



No.	1	2	3	4
Description	Gigabit port	Power	Power port	Red power

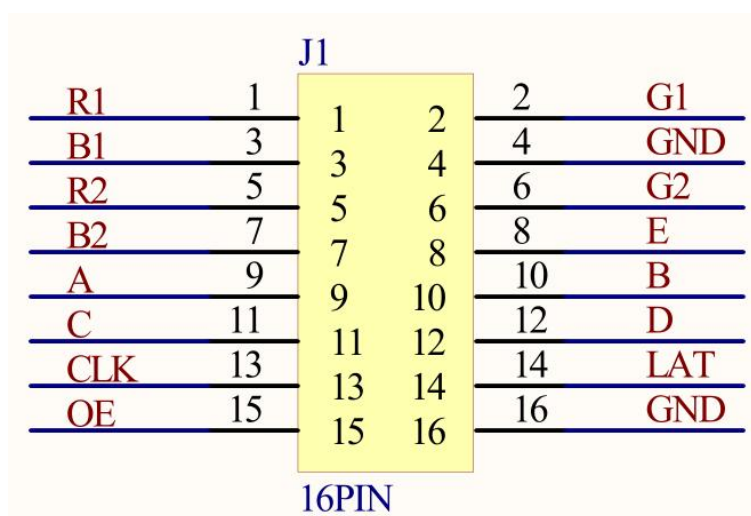
Official website: [www.linsn.com](http://www.linsn.com)

Add: Floor 15&16, Jiajiahao Business Building, No. 10168, Shennan Blvd,  
Nanshan District, Shenzhen

Tel: +86-0755-86183590/ 4008836968

		connector		indicator
No.	5	6/9	7	8
Description	Green indicator	Hub75 Connector	Self-test extension port	Self-test button

## Pinouts



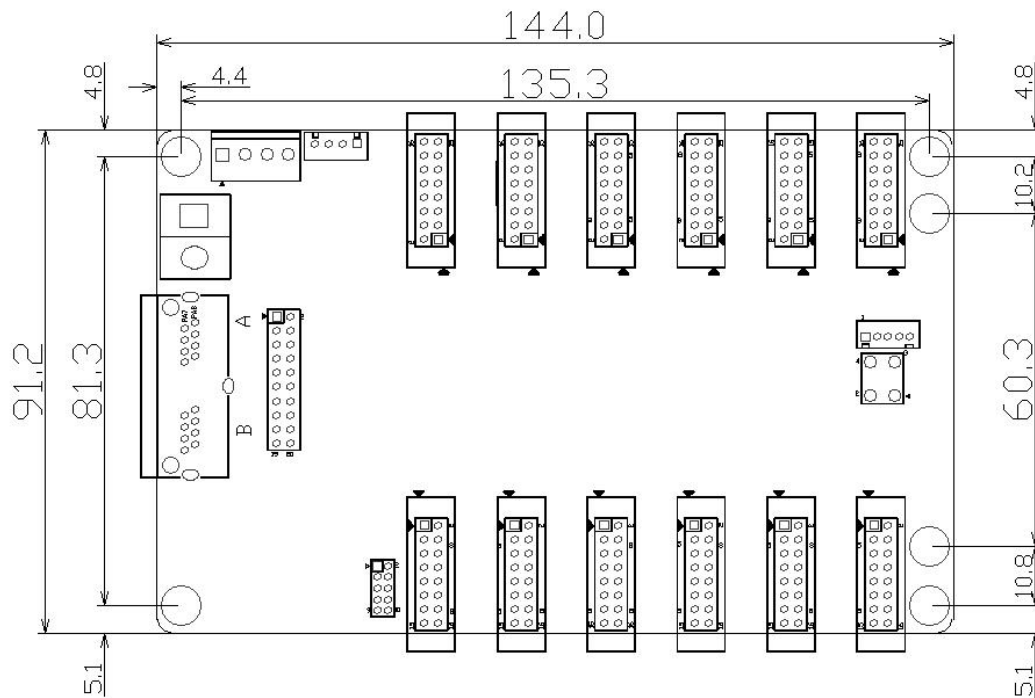
/	R1	1	2	G1	/
/	B1	3	4	GND	GND
/	R2	5	6	G2	/
/	B2	7	8	E	Row selection signal
Row selection signal	A	9	10	B	Row selection signal
Row selection signal	C	11	12	D	Row selection signal
Scan clock	CLK	13	14	LAT	Latch
Display enable	OE	15	16	GND	GND

## Dimension

Official website: [www.linsn.com](http://www.linsn.com)

Add: Floor 15&16, Jiajiahao Business Building, No. 10168, Shennan Blvd,  
Nanshan District, Shenzhen

Tel: +86-0755-86183590/ 4008836968



## Specifications

Capacity	256*768 Pixels (32 scanning mode for example, and please note that there are recommended values depending on the design of LED screen)	
Power	Input Voltage	DC4.5V ~ 5.5V
	Rated power consumption	3W
Working Environment	Temperature	-20℃ ~ 70℃
	Humidity	0% ~ 95%
Physical Dimensions	Dimensions	144.0 X 91.2mm
	Weight	99g
Packing	Packing	Each card packed with small red foam

Official website: [www.linsn.com](http://www.linsn.com)

Add: Floor 15&16, Jiajiahao Business Building, No. 10168, Shennan Blvd,  
Nanshan District, Shenzhen

Tel: +86-0755-86183590/ 4008836968



Info		bag, and 100pcs per carton
	Carton Dimension	622.0mm×465.0mm×176.0mm
	Carton Weight	12.7 kg

**END**